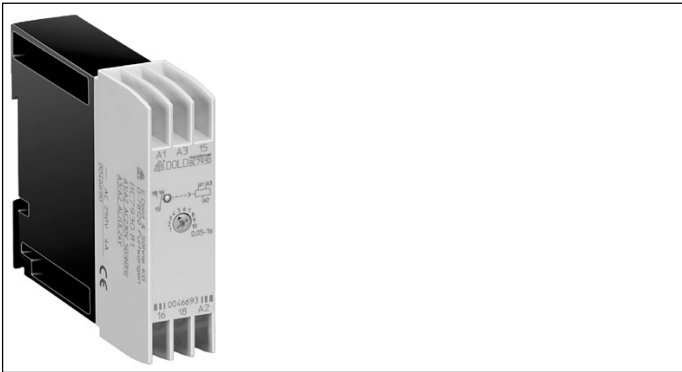
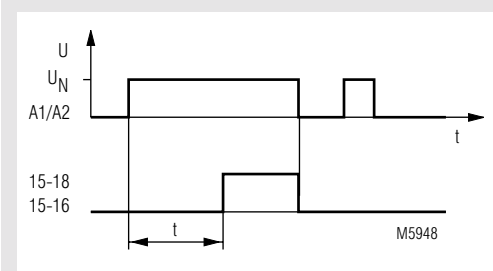


0221544

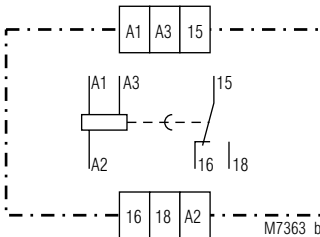


- According to DIN EN 61 812-1
- Time delay between 0,05 s ... 10 h
- Repeat accuracy $\leq 0,5 \% + 10 \text{ ms}$
- Dual voltage supply
- LED indicator for contact position
- 1 changeover contact
- BC 7930N Wire connection: also 2 x 1,5 mm² stranded ferruled (isolated), DIN 46 228-4 or 2 x 2,5 mm² stranded ferruled DIN 46 228-1/-2/-3
- Width 22,5 mm

Function diagram



Circuit diagram



Approvals and marking



Applications

Time dependent controllers

Indication

LED: on when output relay activated (contacts 15-18 are closed)

Technical data

Time circuit

Time ranges:	0,05 ... 1 s	0,5 ... 10 min.
	0,15 ... 3 s	1,5 ... 30 min.
	0,5 ... 10 s	3 ... 60 min.
	1,5 ... 30 s	0,15 ... 3 h
	5 ... 100 s	0,5 ... 10 h
	15 ... 300 s	

Time setting: stepless 1:20
Recovery time: $\leq 100 \text{ ms}$
Repeat accuracy: $\leq 0,5 \% + 10 \text{ ms}$
Voltage influence: $\leq 1 \%$
Temperature influence: $\leq 0,25 \% / \text{K}$

Input

Nominal voltage U_N : AC/DC 24 V¹⁾ + AC 230 V²⁾
 AC/DC 24 V¹⁾ + AC 110 ... 127 V²⁾
 AC/DC 24 V¹⁾ + AC 42 V²⁾
 AC/DC 12 V
¹⁾ at terminals A3-A2
²⁾ at terminals A1-A2

Voltage range: 0,8 ... 1,1 U_N at AC
 0,9 ... 1,25 U_N at DC

Nominal consumption: AC: 4 VA
 DC: 0,4 W

Nominal frequency: 50 / 60 Hz
Frequency range: $\pm 5 \% f_N$
Release voltage: 15 % U_N

Output

Contacts: BC 7930.81, BC 7930N.81: 1 changeover contact
Thermal current I_{th} : 4 A
Switching capacity
 to AC 15
 NO contact: 3 A / AC 230 V EN 60 947-5-1
 NC contact: 1 A / AC 230 V EN 60 947-5-1
Electrical life
 to AC 15 at 1 A, AC 230 V: 1,5 x 10⁵ switching cycles

Technical data

Short circuit strength		
max. fuse rating:	4 A gL	EN 60 947-5-1
Mechanical life:	10 ⁸ switching cycles	

General data

Operating mode:	Continuous operation	
Temperature range:	- 20 ... + 60°C	
Clearance and creepage distances		
overvoltage category / contamination level	4 kV / 2	IEC 60 664-1
EMC		
Electrostatic discharge:	8 kV (air)	EN 61 000-4-2
HF irradiation:	10 V/m	EN 61 000-4-3
Fast transients:	4 kV	EN 61 000-4-4
Surge voltages between wires for power supply:	1 kV	EN 61 000-4-5
between wire and ground:	4 kV	EN 61 000-4-5
Interference suppression:	Limit value class B	EN 55 011
Degree of protection:	Housing: IP 40	EN 60 529
	Terminals: IP 20	EN 60 529
Housing:	Thermoplastic with V0 behaviour according to UL subject 94	
Vibration resistance:	Amplitude 0,35 mm	EN 60 068-2-6
	frequency 10 ... 55 Hz	
Climate resistance:	20 / 060 / 04	EN 60 068-1
Terminal designation:	EN 50 005	
Wire connection		
BC 7930:	1 x 4 mm ² solid or 2 x 1,5 mm ² stranded wire with sleeve DIN 46 288	
BC 7930N:	1 x 4 mm ² solid or 1 x 2,5 mm ² stranded ferruled (isolated) or 2 x 1,5 mm ² stranded ferruled (isolated) DIN 46 228-1/-2/-3/-4 or 2 x 2,5 mm ² stranded ferruled DIN 46 228-1/-2/-3	
Wire fixing:		
BC 7930:	Flat terminals with self-lifting clamping piece DIN 46 206 and DIN 57 609 / VDE 0609	
BC 7930N:	Terminal screws M 3,5 Box terminal with wire protection DIN rail	
Mounting:		EN 50 022
Weight:	80 g	

Dimensions

Width x height x depth: 22,5 x 84 x 97 mm

Standard type

BC 7930N.81	AC/DC 24 V + AC 230 V	5 ... 100 s
Article number:	0052652	
• Front colour grey, with box terminals		
• Output:	1 changeover contact	
• Nominal voltage U _N :	AC/DC 24 V + AC 230 V	
• Time range:	5 ... 100 s	
• Width:	22,5 mm	

Ordering example

BC 7930	.81	AC/DC 24 + AC 230 V	50 / 60 Hz	10 s	
					Time range end value
					Nominal frequency
					Nominal voltage
					Contacts
					BC 7930N: front colour grey, with box terminals
					BC 7930: front colour orange, with flat terminals