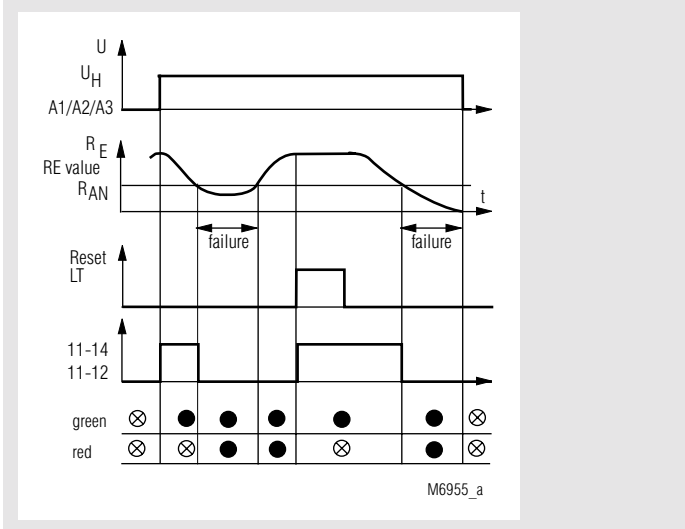


0225279

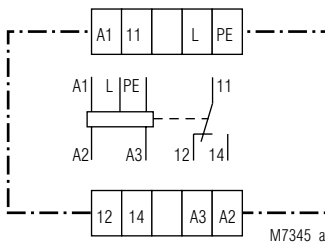


- According to VDE 0413
- Setting range 200 kΩ to 2 MΩ
- Dual voltage model
- LED indicators
- Output: 1 changeover contact
- Closed circuit operation
- Test button
- Reset button
- Width 45 mm

Function diagram



Circuit diagram



Approvals and marking



Applications

Monitors the insulation of motors including connection wires during stand-by. E.g. for submerged pumps or smoke exhaust fans according to the French standard NFS 61.937 page 13 Add.A. The motor is monitored in disconnected state.

Indicators

green LED: auxiliary supply connected
red LED: insulation resistance to low

Notes

All phases must be connected by the load. When using motors in star-delta-connection the measuring input must be connected over an artificial star-point. When the load is connected to voltage the insulation monitor must be disconnected in grounded systems.

Technical data

Auxiliary circuit

Auxiliary voltage U_H : Dual voltage model
Terminal A1 / A2: AC 230 V
Terminal A1 / A3: AC 400 V
Voltage range: 0,8 ... 1,1 U_N
Nominal consumption: approx. 2,5 VA
Frequency range: 40 ... 60 Hz

Measuring circuit

Setting range: 200 kΩ ... 2 MΩ
Setting R_{AN} : infinite on relative scale
Hysteresis: > 10 %
Nominal current: < 1 mA
Operate delay: > 3 s
Internal AC resistance: > 300 kΩ
Internal DC resistance: > 30 kΩ
Measuring voltage: DC 15 V
Max. measuring current ($R_E = 0$): < 0,5 mA
Max. permitted DC voltage: DC 250 V
Max. input voltage: AC 500 V

Technical data

Output

Contacts

BA 5877.11: 1 changeover contact

Thermal current I_{th} : 4 A

Switching capacity

to AC 15

NO contact: 3 A / AC 230 V EN 60 947-5-1

NC contact: 1 A / AC 230 V EN 60 947-5-1

Electrical life

to AC 15 at 1 A, AC 230 V EN 60 947-5-1

NO contact: $1,5 \times 10^5$ switching cycles

Short circuit strength

max. fuse rating: 4 A gL EN 60 947-5-1

Mechanical life: 30×10^6 switching cycles

General data

Operating mode: Continuous operation

Temperature range: - 20 ... + 60°C

Clearance and creepage distances

overvoltage category /
contamination level: 4 kV / 2 IEC 60 664-1

EMC

Electrostatic discharge: 8 kV (air) EN 61 000-4-2

Fast transients: 1 kV EN 61 000-4-4

Surge voltages

between

wires for power supply: 2 kV EN 61 000-4-5

between wire and ground: 4 kV EN 61 000-4-5

Interference suppression: Limit value class B EN 55 011

Degree of protection: Housing: IP 40 EN 60 529

Terminals: IP 20 EN 60 529

Housing:

Thermoplastic with V0 behaviour
according to UL subject 94

Vibration resistance: Amplitude 0,35 mm EN 60 068-2-6
frequency 10 ... 55 Hz

Climate resistance: 20 / 060 / 04 EN 60 068-1

Terminal designation: EN 50 005

Wire connection: 2 x 2,5 mm² solid or
2 x 1,5 mm² stranded wire with sleeve
DIN 46 228-1/-2/-3/-4

Wire fixing:

Flat terminals with self-lifting
clamping piece EN 60 999

Mounting: DIN rail EN 50 022

Weight: 450 g

Dimensions

Width x height x depth: 45 x 74 x 131 mm

Standard type

BA 5877.11 AC 230 V + AC 400 V

Article number: 0047012 stock item

- Output: 1 changeover contact
- Nominal voltage U_N : AC 230 V + AC 400 V
- Width: 45 mm

Application example

