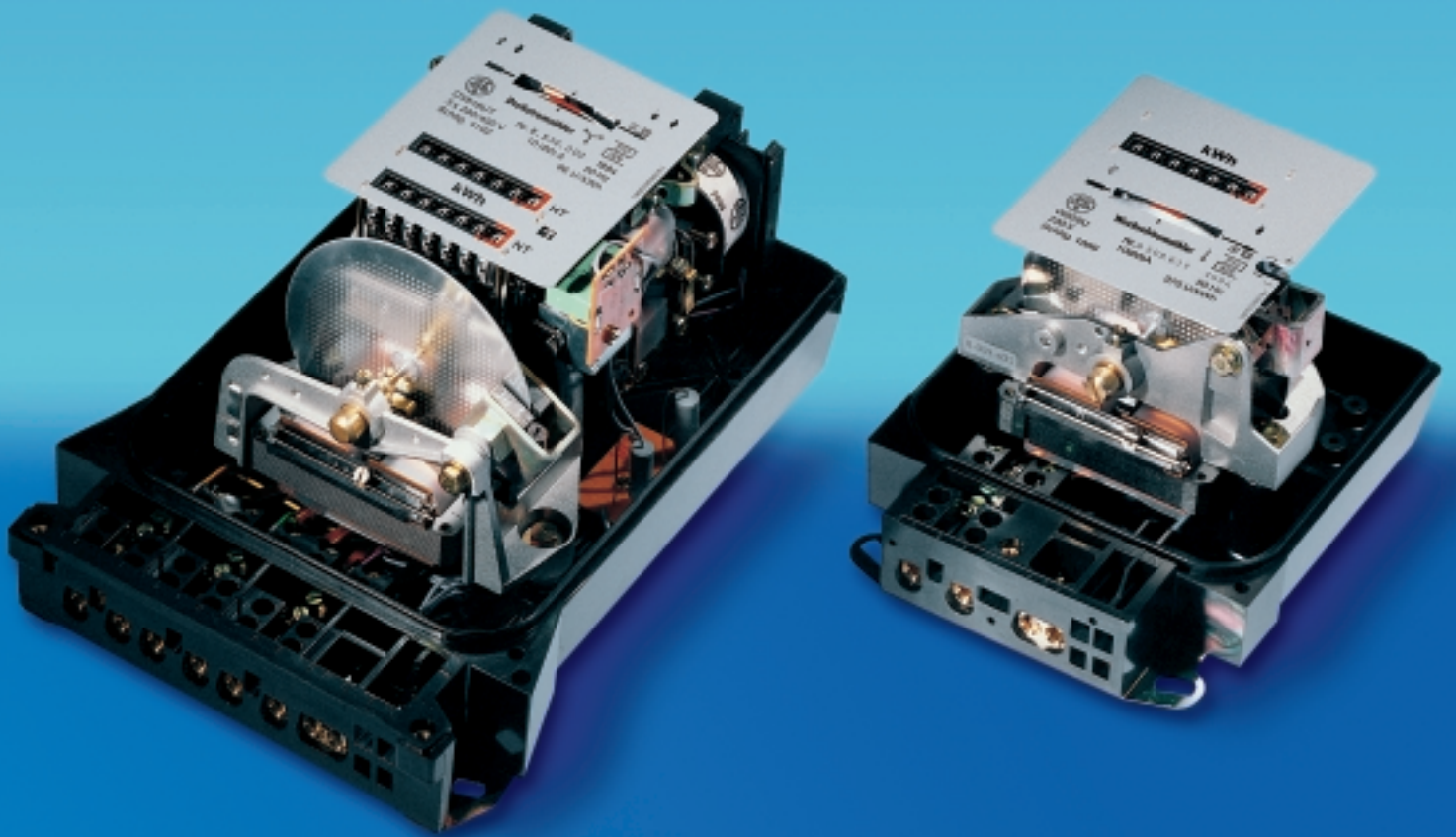




Deutsche Zählergesellschaft mbH



**ELECTRICITY METER
FERRARIS METER**

Single phase meter

type	direct connection W626U	
class		2
rated voltage range	V	220–230
basic (max.) current	A	10(60)
maximum load	% I _N	600
power loss/phase in voltage circuit at U _N	VA	4.1
	W	0.9
power loss/phase in current circuit at I _N	VA	0.3
weight of meter	kg	1.4

Transformer-operated polyphase meters

type	4-wire connection				3-wire connection		
	MDV601U	M1DV601U	MDV616U	M1DV626U	MDD601U	M1DD601U	MDD616U
class	2	1	2	1	2	1	2
rated voltage range	V 3x58/100– 3x230/400	3x58/100– 3x230/400	3x58/100– 3x400/690	3x58/100– 3x230/400	3x100– 3x660	3x100– 3x660	3x100– 3x660
basic (max.) current	A 1 5	1 5	5 II 1 5	5 II 1 5	1 5	1 5	5 II 1 5
maximum load	% I _N 125	125	125*	125*	125	125	125*
power loss/phase in voltage circuit at U _N	VA 3.8	3.2	3.8	3.8	3.8	3.2	3.8
	W 0.7	0.7	0.7	0.8	0.7	0.7	0.8
power loss/phase in current circuit at I _N	VA 0.5	0.5	1.4 (5 A)	0.04 (1 A) 1.2 (5 A)	0.5	0.5	1.4 (5 A)
weight of meter	kg 3.3	3.3	3.3	3.3	2.8	2.8	2.8

*) with reference to 5 A

Table of the most common versions, other versions on request.

Whole current polyphase meters

type		4-wire connection				3-wire connection
		DV604U	DV615U	DV616U	DV620U	DD626U
class		2	2	2	2	2
rated voltage range	V	3x220/380– 3x230/400	3x220/380– 3x230/400	3x220/380– 3x230/400	3x220/380– 3x230/400	3x220– 3x400
basic (max.) current	A	10(40)	20(100)	10(60)	5(50) 10(100)	10(60) 20(120)
maximum load	% I _N	400	500	600	1000	600
power loss/phase in voltage circuit at U _N	VA	3.5	4.8	4.9	5.3	4.8
	W	0.8	0.9	0.9	1.2	1.1
power loss/phase in current circuit at I _N	VA	0.15	0.18	0.1	0.1	0.1
	W					
weight of meter	kg	3.2	3.85	3.3	3.3	2.8
					3.85	3.35

Type scheme for Ferraris meters

1	2	3	4	5	6	7	8	9	
									meter for direct connection
	M								transformer operated meter
	M1								transformer operated meter class 1*
		B							active energy meter
			B						reactive energy meter
			DV						4-wire connection meter
			DD						3-wire connection meter
			W						single phase meter
				60					series 60
				61					series 61
				62					series 62
					1				load factor 125 %
					4				load factor 400 %
					5				load factor 500 %
					6				load factor 600 %
					0				load factor 1000 %*
						U			magnetic bearing
							U		double jewel bearing
								T	single tariff
									double tariff
									electronic SO pulse device
									SO pulse device with pulse value adjustment*
									reverse-running stop

e.g. **MBDV616UTFR** means

- M** – transformer operated meter,
- B** – for reactive energy,
- DV** – 3-phase, 4-wire system,
- 61** – series 61,
- 6** – admissible load factor 600 % I_N (..6) with reference to 1A,
- U** – double jewel bearing,
- T** – two-tariff register,
- F** – pulse device,
- R** – reverse-running stop

* not available for single-phase meters

